

SECTION SIX

Shackles & Rigging Hardware

Bridco stock a range of Alloy shackles, eye bolts, eye nuts and turnbuckles.

PAGE

	Shackles Product Information	118-119
	Grade 'S' Shackles	120 - 121
	Synthetic Slings	122 - 123
	Turnbuckles & Rigging Screws	123 - 125
	Eye Bolts & Nuts	126 - 127
	Thimbles & Grips	128

BRIDGE & COMPANY PTY LTD

37 Taree Street

Burleigh Heads QLD 4220

Telephone: (07) 55 935 688

Fax: (07) 55 935 872

Email: bridge@bridco.com.au

www.bridco.com.au

SHACKLES PRODUCT INFORMATION

SHACKLE INFORMATION

Shackles are used in lifting and static systems as removable links to connect (steel) wire rope, chain and other fittings.

Screw pin shackles are used mainly for non-permanent applications.

Safety pin shackles are used for long-term or permanent applications or where the load may slide on the pin causing rotation of the pin.

Dee shackles are mainly used on one-leg systems whereas anchor or bow shackles are mainly used on multi-leg systems.

Shackles should be inspected before use to ensure that:

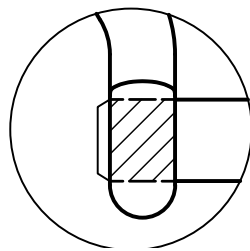
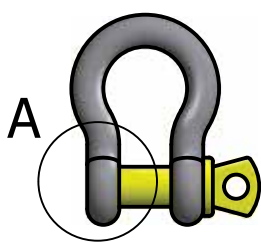
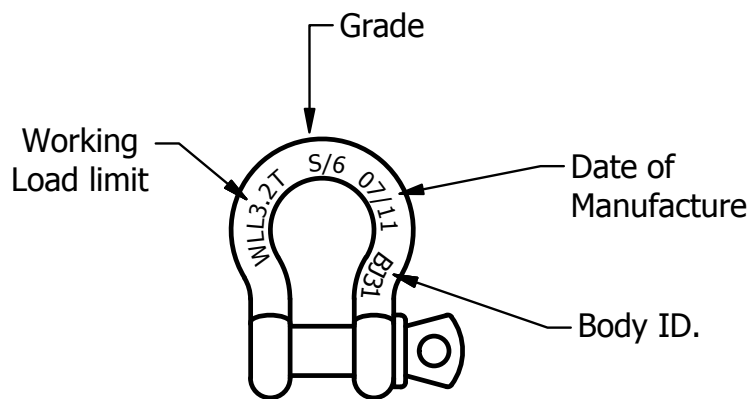
- › All markings are legible
- › The threads of the pin and the body are undamaged
- › The body and the pin are not distorted or unduly worn
- › The body and pin are free from nicks, gouges, cracks and corrosion
- › Shackles may not be heat treated as this may affect their Working Load Limit
- › Never use a safety bolt type shackle without using the split cotter pin
- › Never modify, repair or reshape a shackle by welding, heating or bending as this will affect the Working Load Limit (W.L.L).



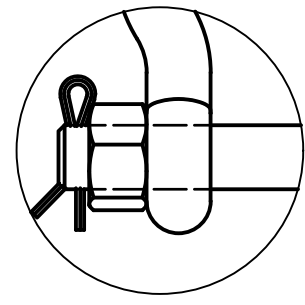
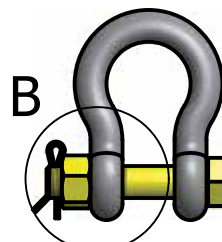
GRADE 'S' SHACKLES

Grade S Shackles are a rated shackle that meet the requirement of AS 2741. Grade 'S' shackles are recommended where high strength is required such as lifting, towing and 4WD applications.

- › Available in both Dee and Bow configurations
- › Available in both Screw pin and Safety Pin type – see detail A and B for more information
- › Because the pin holds more load than the body, the pin diameter is larger than the body diameter
- › For the same W.L.L, they are smaller than Grade 'M'
- › Grade 'S' shackles come in two colour configurations:
 - Standard Grade 'S': Yellow pin
 - Colour Coded Grade 'S': Body and pin colour coded for easy match to components
- › The Body ID and date of Manufacture = the Batch ID



Detail A
Screw Pin



Detail B
Safety Pin

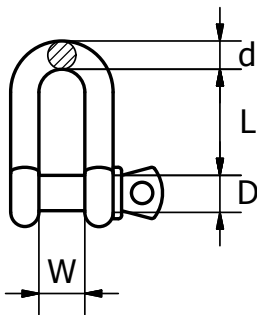
YELLOW PIN GRADE ‘S’ SHACKLES

YELLOW PIN GRADE ‘S’ SCREW PIN SHACKLES TO AS 2741

Chain Dee Type - Capacities 0.5 - 35 tonne

Code	Size mm	W.L.L Tonne	Type	Shape	Closing Method	DIA d mm	DIA PIN D mm	Inside Width W mm	Inside Length L mm	DIA Boss F mm	Approx Weight Kg	UOM
AL-504010	10x11	1.0	Grade S	Dee	Screw	10	11	17	37	25	0.14	Each
AL-504011	11x13	1.5	Grade S	Dee	Screw	11	13	18	43	27	0.17	Each
AL-504013	13x16	2.0	Grade S	Dee	Screw	13	16	21	48	33	0.29	Each
AL-504016	16x19	3.2	Grade S	Dee	Screw	16	19	27	61	40	0.63	Each
AL-504019	19x22	4.7	Grade S	Dee	Screw	19	22	32	72	48	1.02	Each
AL-504022	22x25	6.5	Grade S	Dee	Screw	22	25	37	84	54	1.53	Each
AL-504025	25x29	8.5	Grade S	Dee	Screw	25	29	43	95	60	2.41	Each
AL-504029	29x32	9.5	Grade S	Dee	Screw	29	32	46	108	67	3.09	Each
AL-504032	32x35	12.0	Grade S	Dee	Screw	32	35	52	119	76	4.31	Each
AL-504035	35x38	13.5	Grade S	Dee	Screw	35	38	57	113	84	6.01	Each

GRADE ‘S’ SHACKLES

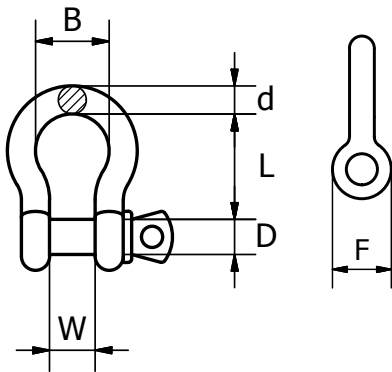


Also available in a safety pin style.

YELLOW PIN GRADE 'S' SCREW PIN SHACKLES TO AS 2741

Anchor Bow Type - Capacities 0.33 - 55 tonne

Code	Size mm	W.L.L Tonne	Type	Shape	Closing Method	DIA d mm	DIA PIN D mm	Inside Width W mm	Inside Length L mm	Width of Bow B mm	DIA Boss F mm	Approx Weight Kg	UOM
AL-503010	10x11	1.0	Grade S	Bow	Screw	10	11	17	37	26	25	0.14	Each
AL-503011	11x13	1.5	Grade S	Bow	Screw	11	13	18	43	29	27	0.17	Each
AL-503013	13x16	2.0	Grade S	Bow	Screw	13	16	21	48	33	33	0.29	Each
AL-503016	16x19	3.2	Grade S	Bow	Screw	16	19	27	61	43	40	0.63	Each
AL-503019	19x22	4.7	Grade S	Bow	Screw	19	22	32	72	51	48	1.02	Each
AL-503022	22x25	6.5	Grade S	Bow	Screw	22	25	37	84	58	54	1.53	Each
AL-503025	25x29	8.5	Grade S	Bow	Screw	25	29	43	95	68	60	2.41	Each
AL-503029	29x32	9.5	Grade S	Bow	Screw	29	32	46	108	74	67	3.09	Each
AL-503032	32x35	12.0	Grade S	Bow	Screw	32	35	52	119	83	76	4.31	Each
AL-503035	35x38	13.5	Grade S	Bow	Screw	35	38	57	113	92	84	6.01	Each



Also available in a safety pin style.

GRADE 'S' SHACKLES

POLYESTER ROUND SLINGS & FLAT WEBBING SLINGS

Round Slings Manufactured to AS 4497.1.1 Flat Slings Manufactured to AS 1353.1

All Flat and Round Slings are Fully Tested Test Certificate Supplied With All Slings		ROUND SLINGS Comply to AS4497.1										
		FLAT SLINGS Comply to AS1353.1										
		L - LOAD FACTOR		L - 1.0	L - 0.8	L - 2.0	L - 1.7	L - 1.4	L - 1.0	L - 1.7	L - 1.38	L - 1.38
ROUND SLINGS Code	FLAT SLINGS Code	Colour Code	W.L.L. Tonnes	Vertical W.L.L. Tonnes	Choke S.W.L. Tonnes	Basket S.W.L. Tonnes	60° S.W.L. Tonnes	90° S.W.L. Tonnes	120° S.W.L. Tonnes	60° S.W.L. Tonnes	60° S.W.L. Tonnes	60° Choke S.W.L. Tonnes
MRS1000	FS-2-1000	Violet	1.0	1.0	0.8	2.0	1.73	1.41	1.0	1.73	1.38	1.38
MRS2000	FS-2-2000	Green	2.0	2.0	1.3	4.0	3.46	2.82	2.0	3.46	2.76	2.76
MRS3000	FS-2-3000	Yellow	3.0	3.0	2.4	6.0	5.19	4.23	3.0	5.19	4.14	4.14
MRS4000	FS-2-4000	Grey	4.0	4.0	3.2	8.0	6.92	5.63	4.0	6.92	5.52	5.52
MRS5000	FS-2-5000	Red	5.0	5.0	4.0	10.0	8.65	7.05	5.0	8.65	6.90	6.90
MRS6000	FS-2-6000	Brown	6.0	6.0	4.8	12.0	10.38	8.46	6.0	10.38	8.28	8.28
MRS8000	FS-2-8000	Blue	8.0	8.0	6.4	16.0	13.84	11.28	8.0	13.84	11.4	11.4
MRS10000	FS-2-10000	Orange	10.0	10.0	8.0	20.0	17.30	14.10	10.0	17.30	13.80	13.80

ROUND SLINGS

CARE AND USE

1. Check Australian Standard AS 4497.1 and AS 1353.1 for use and inspection guidelines.
2. Never overload the equipment.
3. Do not use if ID tag is removed.
4. Inspect sling for damage prior to use.
5. Do not use sling if there is any sign of cut webbing, snagging, heat or chemical damage, excessive wear, damaged seams, any other defect or presence of grit, abrasive materials or other deleterious matter.
6. Do not tie knots in sling webbing.
7. Protect sling webbing from sharp edges of load. Use protective sleeves.
8. Do not expose slings to temperatures above 90°C.
9. Do not allow abrasive or other damaging grit to penetrate the fibres.
10. Consult with manufacturer's recommendations before immersing a sling in a chemical solution.
11. Keep away from strong alkalis and phenolic compounds.



Flat Slings commonly known as webbing slings are an all-purpose lifting sling enabling a strong and non-damaging lift of a load. They are extremely light in weight and flexible. Flat Slings are a continuous length made from polyester webbing sewn into a continuous length with an eye at each end. When used they cover a broad support area, which cushions the load against damage and reduces slipping. The low stretch characteristics of the polyester webbing also prevent 'load bounce' when hoisting very heavy weights.

- › Manufactured to AS 1353.1
- › Test Certificate available on request
- › Available in various lengths from 0.5m to 12.0m

Round slings are an all-purpose lifting sling enabling a strong and non-damaging lift of its load. They are extremely light in weight and flexible in multiple directions, allowing easy and quick manipulation even when fragile loads are being lifted. Round Slings are a continuous loop made from polyester yarn encased in a sleeve of polyester or nylon fabric. The sleeve is constructed so it protects the internal rows of yarn filament and keeps them in a parallel formation at all times.

The yarn fibre (core) is free to spread out where the round sling is in contact with its load. This provides a broad support, which cushions the load against damage and reduces slipping. The low stretch characteristics of the polyester yarn also prevent 'load bounce' when hoisting very heavy weights.

- › Manufactured to AS 4497.1
- › Test Certificate available on request
- › Available in various lengths from 0.5m to 15.0m

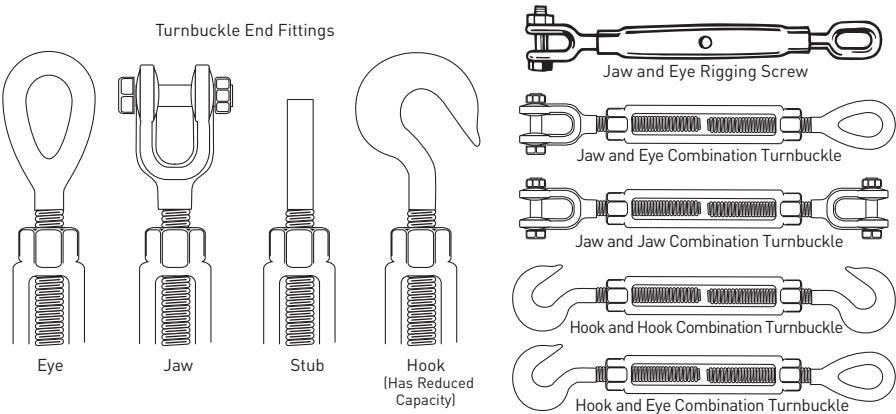


RIGGING SCREWS

RATED RIGGING HARDWARE

Rated Rigging Hardware complies with a number of different standards. They have a working load limit (W.L.L) and are rated for lifting applications. Bridco's range of quality rigging hardware is manufactured from the finest milling techniques and designed for both heavy industry use and general hardware applications.

RIGGING SCREWS AND TURNBUCKLES



JAW AND JAW TURNBUCKLES GRADE P

Tested Hot Dipped Galvanised

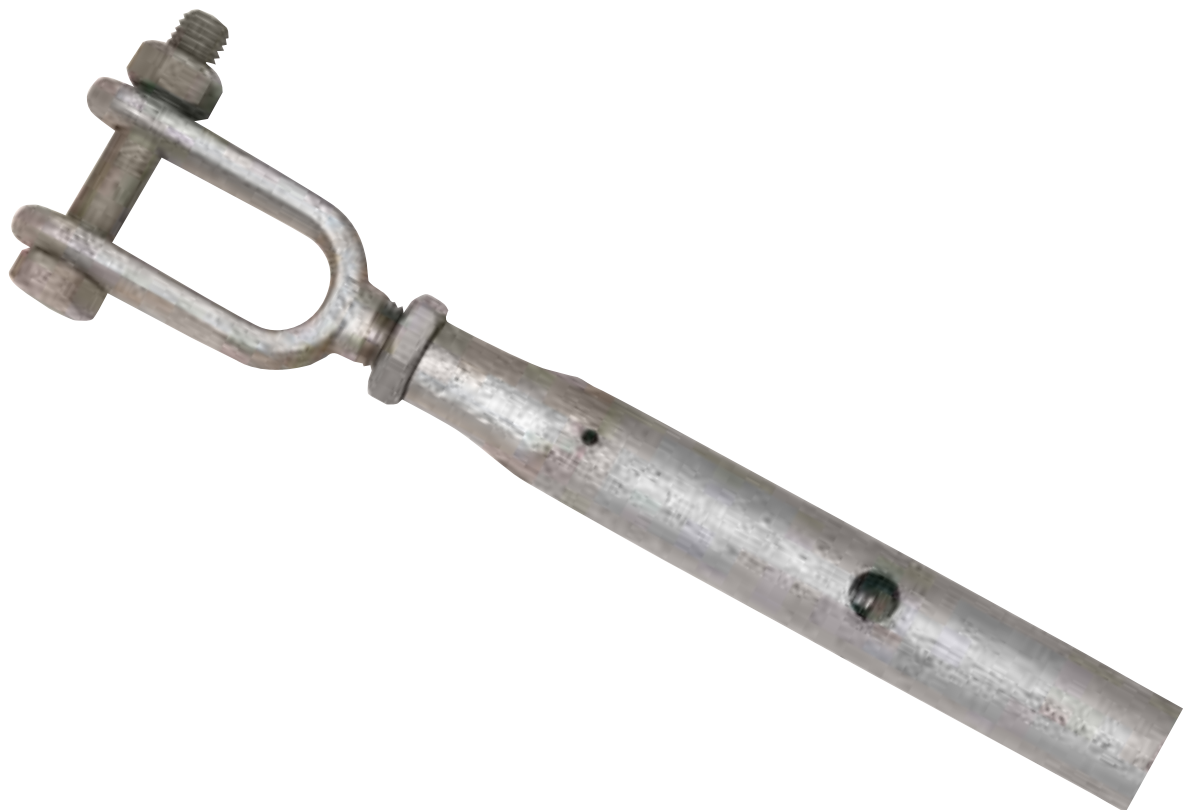
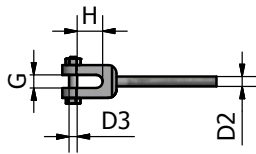
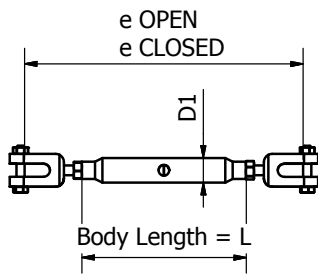
Code	Size mm	Finish	e Open mm	e Closed mm	L mm	D1 mm	D2 mm	D3 mm	G mm	H mm	W.L.L Tonne	Pack Qty	Weight Per 100 (kg)	UOM
327310	10	Galvanised	359	259	152	21	10	8	11	25	0.3	100	38	Each
327313	13	Galvanised	465	369	229	25	13	11	14	36	0.5	50	75	Each
327316	16	Galvanised	523	393	229	27	16	14	18	40	0.75	30	130	Each
327320	20	Galvanised	563	413	229	34	20	17	25	55	1.25	20	185	Each
327324	24	Galvanised	786	589	356	42	24	20	26	57	2.5	10	380	Each
327333	33	Galvanised	830	645	381	51	33	25	34	64	5	5	680	Each
327338	38	Galvanised	870	655	407	57	38	27	38	75	6	3	1000	Each

RIGGING SCREWS

JAW AND JAW RIGGING SCREWS WITH LOCKNUTS GRADE P

Tested Hot Dipped Galvanised, AS3219

Code	Size mm	Grade	e Open mm	e Closed mm	L mm	D1 mm	D2 mm	D3 mm	G mm	H mm	W.L.L Tonne	Weight (kg)	UOM
AL-407010	10	P	349	235	152	21	10	8	11	21	0.6	0.48	Each
AL-407013	12	P	524	343	229	25	13	9	19	35	1.0	0.98	Each
AL-407016	16	P	550	361	229	27	16	13	22	51	1.6	1.4	Each
AL-407020	20	P	550	387	229	34	20	16	22	48	2.5	2.3	Each
AL-407024	24	P	822	556	356	42	24	22	32	65	4	4.85	Each



RIGGING SCREWS

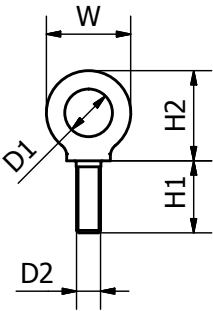
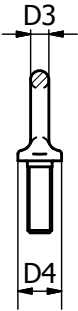
EYE BOLTS

METRIC SHOULDERED EYEBOLTS DIN 580

Zinc Plated Finish, Conforms to DIN 580

Code	Size mm	Finish	W mm	H1 mm	H2 mm	D1 mm	D2 mm	D3 mm	D4 mm	W.L.L Tonne	Pack Qty	Weight Per 100 (kg)	UOM
AL-601008	8	Zinc Plated	36	13	36	20	8	8	20	0.14	400	6	Each
AL-601010	10	Zinc Plated	45	17	45	25	10	10	25	0.23	180	11	Each
AL-601012	12	Zinc Plated	54	20.5	52	30	12	12	30	0.34	110	18	Each
AL-601016	16	Zinc Plated	63	27	61	35	16	14	35	0.7	80	28	Each
AL-601020	20	Zinc Plated	72	30	70	40	20	16	40	1.2	50	45	Each
AL-601022	22	Zinc Plated	81	35	80	45	22	18	45	1.5	30	67	Each
AL-601024	24	Zinc Plated	90	36	90	50	24	20	50	1.8	20	87	Each
AL-601030	30	Zinc Plated	108	45	110	60	30	24	65	3.6	4	166	Each
AL-601036	36	Zinc Plated	126	54	130	70	36	28	75	5.1	4	265	Each

DIN EYE BOLTS

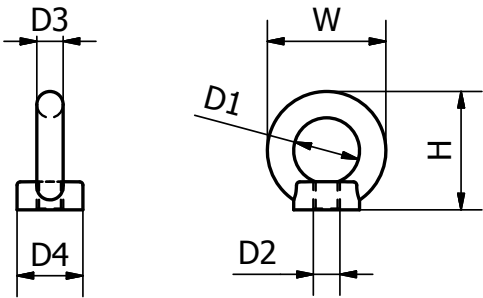


EYE NUTS

METRIC SHOULDERED EYE NUTS TO DIN 582

Zinc Plated Finish. Conforms to DIN 580 and DIN 582

Code	Size mm	Finish	W mm	H mm	D1 mm	D2 mm	D3 mm	D4 mm	W.L.L Tonne	Pack Qty	Weight Per 100 (kg)	UOM
AL-602008	8	Zinc Plated	36	36	20	8	8	20	0.14	400	5	Each
AL-602010	10	Zinc Plated	45	45	25	10	10	25	0.23	180	9	Each
AL-602012	12	Zinc Plated	54	52	30	12	12	30	0.34	110	16	Each
AL-602016	16	Zinc Plated	63	61	35	16	14	35	0.7	80	24	Each
AL-602020	20	Zinc Plated	72	70	40	20	16	40	1.2	50	36	Each
AL-602022	22	Zinc Plated	81	80	45	22	18	45	1.5	30	58	Each
AL-602024	24	Zinc Plated	90	90	50	24	20	50	1.8	20	72	Each



DIN EYE NUTS

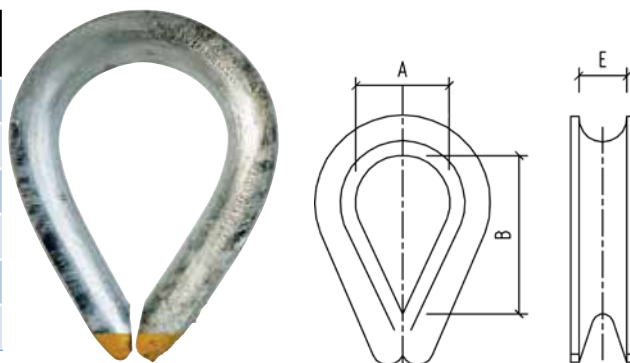


GALVANISED THIMBLES AS 1138

AS THIMBLES

Hot Dipped Galvanised, Conforms to AS 1138

Code	Size mm	E mm	A mm	B mm	Pack Qty	UOM
AL-302506	6	7	16	25	400	Each
AL-302508	8	7.9	22	33	400	Each
AL-302510	10	10.3	25	38	400	Each
AL-302512	12	14.3	32	44	80	Each
AL-302516	16	15.9	41	59	75	Each
AL-302520	20	21.6	52	75	30	Each



WIRE ROPE GRIPS AS 2076

Hot Dipped Galvanised, Conforms to AS 2076

Code	Size mm	c mm	h mm	w mm	e mm	d mm	b mm	a mm	Weight kg	UOM
AL-301506	6	14	26	28	20	M6	15	13	0.040	Each
AL-301508	8	18	34	34	22	M8	19	14.5	0.069	Each
AL-301510	10	20	40	42	27	M10	23	17	0.120	Each
AL-301512	12	22.3	48	50	32	M12	28	20	0.132	Each
AL-301514	14	27	52	52	38	M14	32	22	0.223	Each
AL-301516	16	31	64	66	41	M16	32	26	0.351	Each
AL-301520	20	43	88	89	58	M20	46	36	0.980	Each

