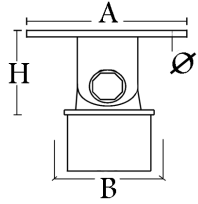
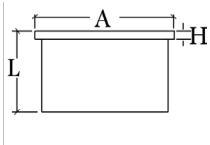


The following tube fittings are for use with 50.8mm/2" tube.



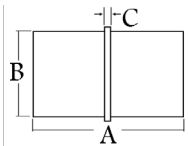
ADJUSTABLE RAIL SUPPORT – FLAT RAIL

CODE	TUBE	WALL (mm)	A (mm)	B (mm)	H (mm)	I (mm)	FINISH
SR-SQ40112	2"	1.5mm	66	50.8	50	6	MIRROR
SR-SQ40112S	2"	1.5mm	66	50.8	50	6	SATIN



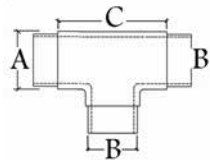
END CAP – FLAT

CODE	TUBE	WALL (mm)	A (mm)	H (mm)	L (mm)	FINISH
SR-SQ30112	2"	1.5mm	50.8	3	33	MIRROR



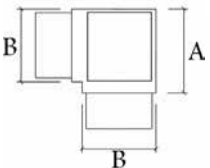
FLUSH JOINER – "IN LINE"

CODE	TUBE	WALL (mm)	A (mm)	B (mm)	C (mm)	FINISH
SR-SQ10712	2"	1.5mm	66	50.8	6	MIRROR



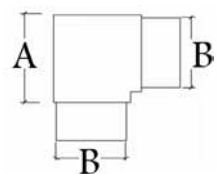
FLUSH JOINER – TEE

CODE	TUBE	WALL (mm)	A (mm)	B (mm)	C (mm)	FINISH
SR-SQ10312	2"	1.5mm	60	50.8	75	MIRROR



FLUSH JOINER – 90 DEGREE TEE

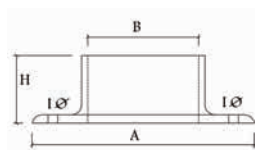
CODE	TUBE	WALL (mm)	A (mm)	B (mm)	FINISH
SR-SQ10512	2"	1.5mm	63	50.8	MIRROR



FLUSH JOINER – 90 DEGREE

CODE	TUBE	WALL (mm)	A (mm)	B (mm)	FINISH
SR-SQ10112	2"	1.5mm	63	50.8	MIRROR

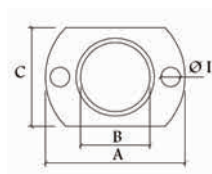
The following post fittings are for use with 50.8mm / 2" tube.



BASE PLATE FLANGE – ROUND BASE

CODE	TUBE	A (mm)	B (mm)	H (mm)	I (mm)	FINISH
SR-BPFR-50	2"	102	50.8	31	9	MIRROR
SR-BPFRX-50	2"	102	50.8	31	9	MIRROR

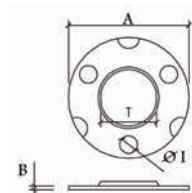
X - Indicates flange without grub screw.



BASE PLATE FLANGE – OBLONG BASE

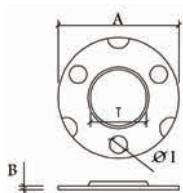
CODE	TUBE	A (mm)	B (mm)	H (mm)	I (mm)	C (mm)	FINISH
SR-BPF0-50	2"	100	50.8	31	9	70	MIRROR
SR-BPFOX-50	2"	100	50.8	31	9	70	MIRROR

X - Indicates flange without grub screw.



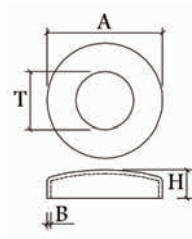
BASE PLATE – HEAVY DUTY – WELD ON

CODE	TUBE	A (mm)	B (mm)	I (mm)	T (mm)	FINISH
SR-BPHD-50	2"	100	8	9	51	SATIN



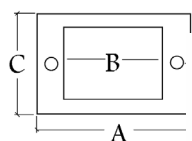
BASE PLATE – WELD ON

CODE	TUBE	A (mm)	B (mm)	I (mm)	T (mm)	FINISH
SR-BP-50	2"	100	3	8.5	51	SATIN



BASE PLATE COVER – ARCHED

CODE	TUBE	A (mm)	B (mm)	H (mm)	T (mm)	FINISH
SR-BPC-50	2"	102	3	26	51	MIRROR



BASE PLATE FLANGE – OBLONG BASE

CODE	TUBE	WALL (mm)	A (mm)	B (mm)	C (mm)	H (mm)	I (mm)	FINISH
SR-SQ20112	2"	1.5mm	116	50.8	80	30	8	MIRROR