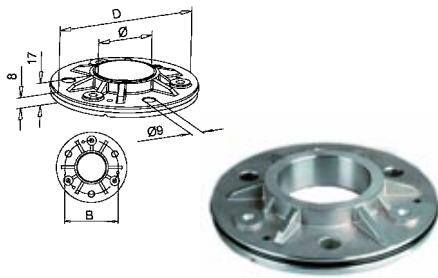


The following post fittings are for use with 48.3mm tube.

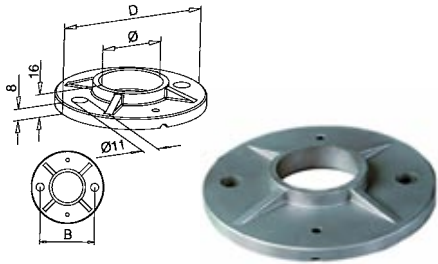
BASE PLATE WITH RUBBER RING



CODE	Ø	B (mm)	D (mm)	FINISH
AN-143502048G*	48.3	90	115	SATIN

*DENOTES RUN OUT LINE

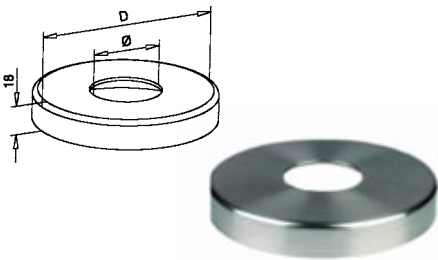
BASE PLATE



CODE	Ø	B (mm)	D (mm)	FINISH
AN-140940048G*	48.3	75	100	SATIN

*DENOTES RUN OUT LINE

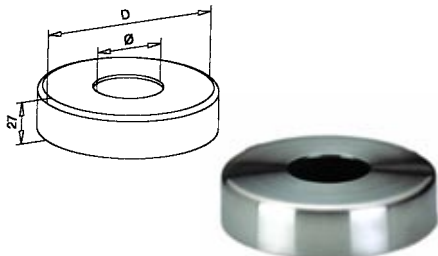
BASE PLATE COVER



CODE	Ø	D (mm)	FINISH
AN-140512048G*	50	105	SATIN

*DENOTES RUN OUT LINE

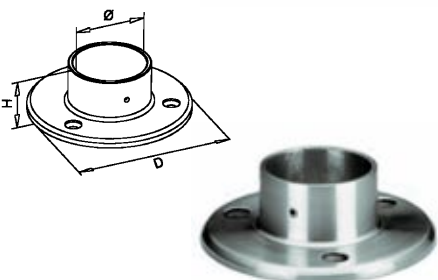
BASE PLATE COVER



CODE	Ø	D (mm)	FINISH
AN-140511048G*	50	120	SATIN

*DENOTES RUN OUT LINE

POST FLANGE



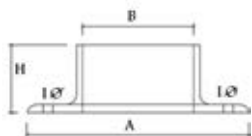
CODE	Ø	D (mm)	FINISH
AN-140505048G*	48.3	100	SATIN

*DENOTES RUN OUT LINE



The following post fittings are for use with 50.8mm / 2" tube.

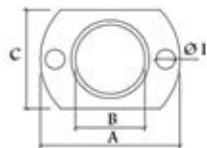
BASE PLATE FLANGE - ROUND BASE



CODE	TUBE	A (mm)	B (mm)	H (mm)	I (mm)	FINISH
SR-BPFR-50	2"	102	50.8	31	9	MIRROR
SR-BPFRX-50	2"	102	50.8	31	9	MIRROR

X - Indicates flange without grub screw.

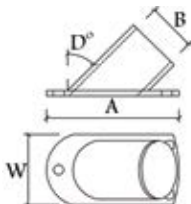
BASE PLATE FLANGE - OBLONG BASE



CODE	TUBE	A (mm)	B (mm)	H (mm)	I (mm)	C (mm)	FINISH
SR-BPF0-50	2"	100	50.8	31	9	70	MIRROR
SR-BPFOX-50	2"	100	50.8	31	9	70	MIRROR

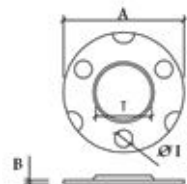
X - Indicates flange without grub screw.

BASE PLATE FLANGE - OBLONG BASE - 37 DEGREE



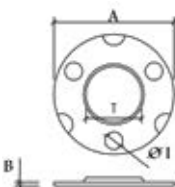
CODE	TUBE	D (mm)	A (mm)	B (mm)	W (mm)	I (mm)	FINISH
SR-BPF037-50	2"	37	110	50.8	70	6	MIRROR

BASE PLATE - HEAVY DUTY - WELD ON



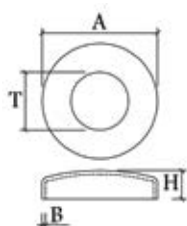
CODE	TUBE	A (mm)	B (mm)	I (mm)	T (mm)	FINISH
SR-BPHD-50	2"	100	8	9	51	SATIN

BASE PLATE / WELD ON

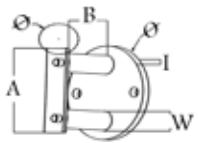


CODE	TUBE	A (mm)	B (mm)	I (mm)	T (mm)	FINISH
SR-BP-50	2"	100	3	8.5	51	SATIN

BASE PLATE COVER - ARCHED



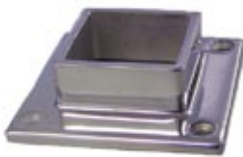
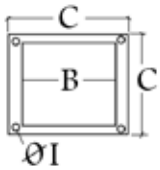
CODE	TUBE	A (mm)	B (mm)	H (mm)	T (mm)	FINISH
SR-BPC-50	2"	102	0.8	26	51	MIRROR



POST WALL BRACKET / ROUND POST

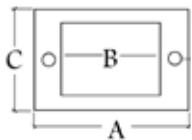
CODE	TUBE	A (mm)	B (mm)	W (mm)	I (mm)	FINISH
SR-PWB-50 *	2"	89.5	50	20	5.5	MIRROR

*DENOTES RUN OUT LINE



BASE PLATE FLANGE - SQUARE BASE

CODE	TUBE	WALL (mm)	B (mm)	C (mm)	H (mm)	I (mm)	FINISH
SR-SQ20512	2"	1.5mm	50.8	100	30	8	MIRROR



BASE PLATE FLANGE - OBLONG BASE

CODE	TUBE	WALL (mm)	A (mm)	B (mm)	C (mm)	H (mm)	I (mm)	FINISH
SR-SQ20112	2"	1.5mm	116	50.8	80	30	8	MIRROR

POST FITTINGS RUNOUT LINES

The components listed below will be discontinued due to low demand, once stock is depleted. These components are not featured in this catalogue but have been a part of previous publications of the 'Bridco Modular Handrail Catalogue'.

CODE	DESCRIPTION	CODE	DESCRIPTION
AN-143510048	HEAVY DUTY BASE	AN-140913048MP	POST - HEAVY DUTY
AN-143511048	HEAVY DUTY BASE	SR-BPCB-50	BASE PLATE COVER TYPE B
AN-140544048	POST - STAIR THREAD	SR-BPB-50	BASE PLATE - TYPE B





HANDRAILS

