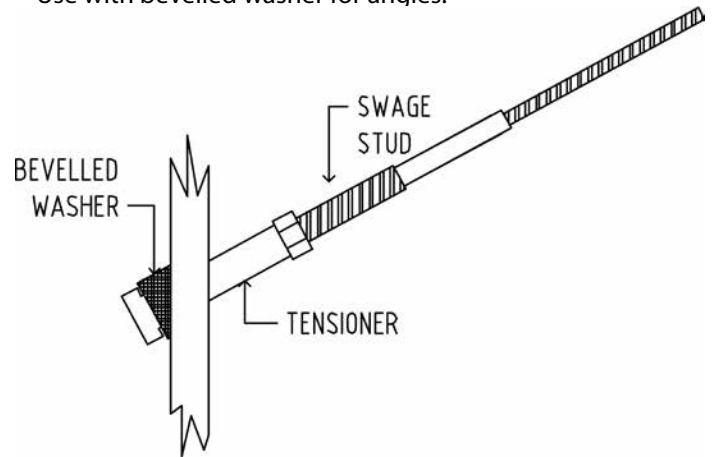
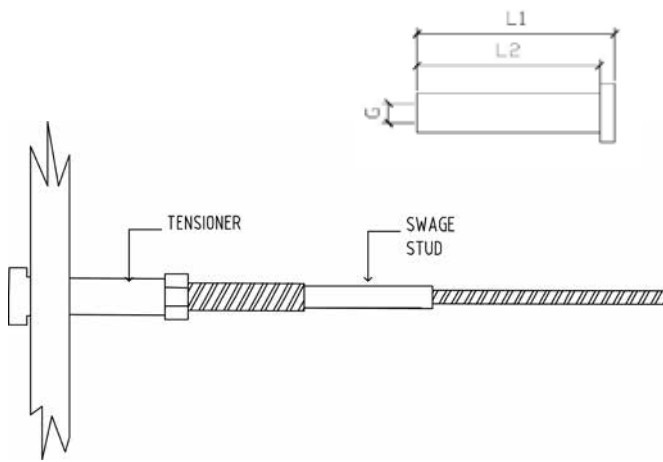




TENSIONER ALLEN KEY HEAD

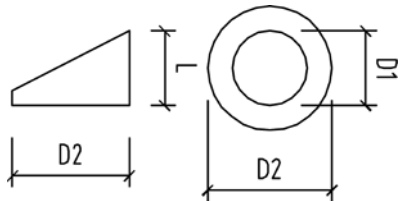
CODE	D1	D2	L1	L2	G
SS-7500-05	8	12	33	30	M5
SS-7500-06	8	12	40	35	M6
SS-7500-08	10	14	45	40	M8
SS-7500-10	13	17	50	45	M10

Use with bevelled washer for angles.



STAINLESS STEEL BEVELLED WASHERS

CODE	D1	D2	L1	G
SS-7702-01	6	13	35 DEGREES	11
SS-7702-02	8.2	13	35 DEGREES	11
SS-7702-01R	6	13	35 DEGREES	11
SS-7702-02R	8.2	13	35 DEGREES	11



For use on stairways where a through post fitting such as a tensioner is being used.

SS-7702-02 can be used with Bridco Tensioner SS-7500.

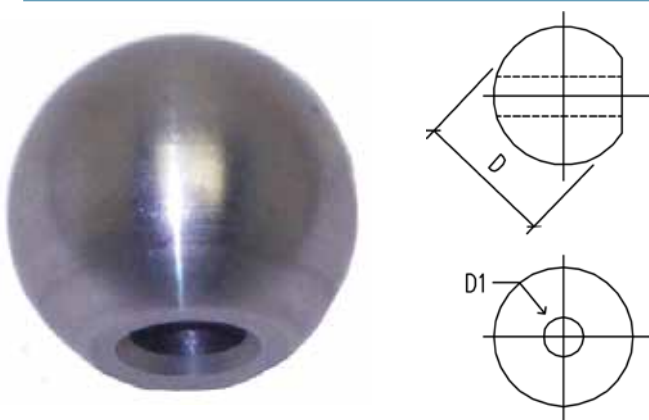
NYLON WASHER TO SUIT TENSIONERS

CODE	TO SUIT
NR-WASH-08NYL	SS-7500-05 SS-7500-06

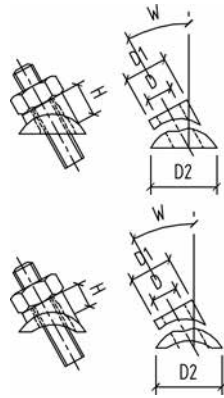


ARCHITECTURAL BALL

CODE	D	D1	D2
SS-7701-503	15	5.3	10
SS-7701-604	20	6.3	11

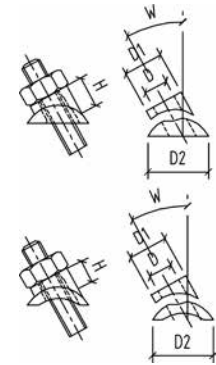


Architectural Balls or Bevelled Washers can be used with internal threaded terminals or tensioners for angles, e.g. stairs etc.



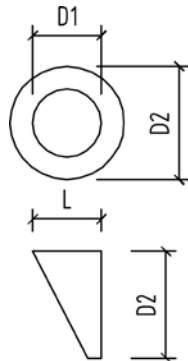
STAINLESS STEEL ADJUSTABLE ANGLES FOR SQUARE POSTS

CODE	NOMINAL SIZE	SUIT THREAD SIZE	D mm	D1 mm	D2 mm	FROM W	TO W	FROM H	TO H
SS-7703-06	6	5.3	6.4	13	20	25deg	45deg	9.5	10.5



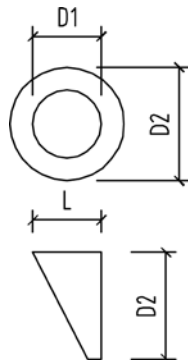
STAINLESS STEEL ADJUSTABLE ANGLES FOR ROUND POSTS

CODE	NOMINAL SIZE	SUIT THREAD SIZE	D mm	D1 mm	D2 mm	FROM W	TO W	FROM H	TO H
SS-7704-06	6	M4-M6	6.4	13	20	25deg	45deg	12	13



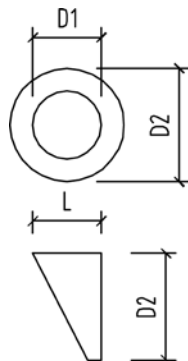
BEVELED ANGLED WASHER NYLON (To suit 2" tube)

CODE	L	D1 mm	D2 mm	COLOUR	ANGLE
NR-168187BW	12	6.7	15	WHITE	37 degree
NR-168187BG	12	6.7	15	GREY	37 degree
NR-168187BB	12	6.7	15	BLACK	37 degree



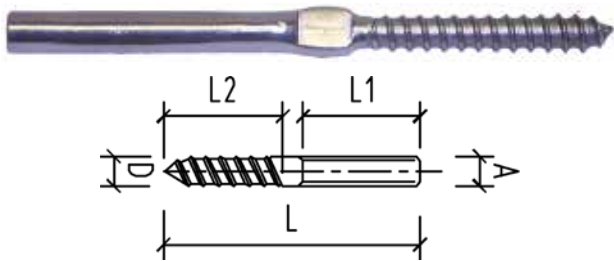
BEVELED ANGLED WASHERS MINI (Suit threaded studs)

CODE	L	D1 mm	D2 mm	COLOUR	ANGLE
NR-165148BG	12	6.5	14.8	GREY	37 degree



BEVELED ANGLED WASHERS MINI (Suit tensioners)

CODE	L	D1 mm	D2 mm	COLOUR	ANGLE
NR-185148BG	12	8.7	14.8	GREY	37 degree
NR-185148BB	12	8.7	14.8	BLACK	37 degree

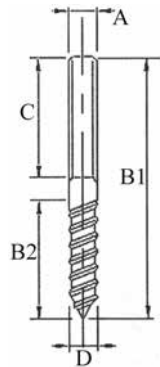


SWAGE STUD WITH LAG SCREW

CODE	A	D	L	L1	L2
SS-7831R-06	1/8"	6mm Right	90	40	40
SS-7831L-06	1/8"	6mm Left	90	40	40

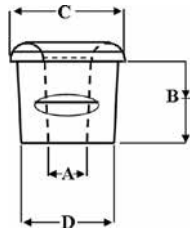
R = Right hand thread
L = Left hand thread

Bridco swage lag screws use left hand thread one end and right hand the other, tension is gained while screwing in.



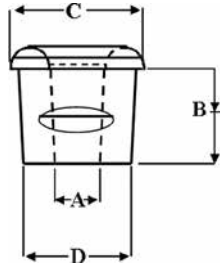
DOUBLE THREADED COACH (LAG) SCREW

CODE RHT	A	L1	L2	C	D
SS-78311-08	M8	100	47	40	8
SS-78311-10	M10	100	57	30	10



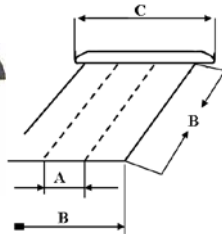
NYLON GROMMET - FLAT

CODE	A mm	B mm	C mm	D mm	COLOUR	DRILL SIZE
NR-106874FB	6.2	10	12	9	BLACK	9mm
NR-106874FS	6.2	10	12	9	SILVER	9mm
NR-106874FC	6.2	10	12	9	CLEAR	9mm



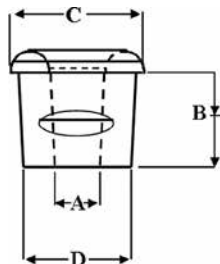
NYLON GROMMET - TO SUIT CURVED SURFACES

CODE	A mm	B mm	C mm	D mm	COLOUR	DRILL SIZE
NR-107090CW	7	7.8	13.4	9	WHITE	9mm
NR-107090CG	7	7.8	13.4	9	GREY	9mm
NR-107090CB	7	7.8	13.4	9	BLACK	9mm



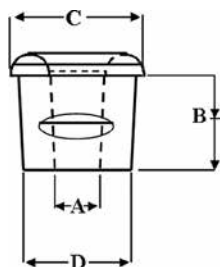
NYLON GROMMET - 37 DEGREE (SPLIT) FOR FLAT SURFACES

CODE	A mm	B mm	C mm	D mm	COLOUR	DRILL SIZE
NR-104090AW	4.2	8	15	9	WHITE	9mm
NR-104090AG	4.2	8	15	9	GREY	9mm
NR-104090AB	4.2	8	15	9	BLACK	9mm



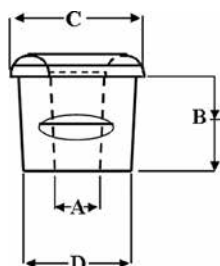
NYLON GROMMET - SPLIT FOR FLAT SURFACES

CODE	A mm	B mm	C mm	D mm	COLOUR	DRILL SIZE
NR-104290FB	4.2	8	13	9	BLACK	9mm
NR-104290FG	4.2	8	13	9	GREY	9mm



NYLON GROMMET - TO SUIT CURVED SURFACES

CODE	A mm	B mm	C mm	D mm	COLOUR	DRILL SIZE
NR-104080CW	4.5	6	12	8	WHITE	8mm
NR-104080CG	4.5	6	12	8	GREY	8mm
NR-104080CB	4.5	6	12	8	BLACK	8mm



NYLON GROMMET - TO SUIT FLAT SURFACES

CODE	A mm	B mm	C mm	D mm	COLOUR	DRILL SIZE
NR-108127FW	8.6	8.2	15.8	12.8	WHITE	1/2"
NR-108127FG	8.6	8.2	15.8	12.8	GREY	1/2"
NR-108127FB	8.6	8.2	15.8	12.8	BLACK	1/2"

GROMMETS

Used when passing wire rope through steel, aluminium or even timber posts. These UV stabilised, high density polythene grommets give a neat appearance as well as protection from chafe and electrolysis.