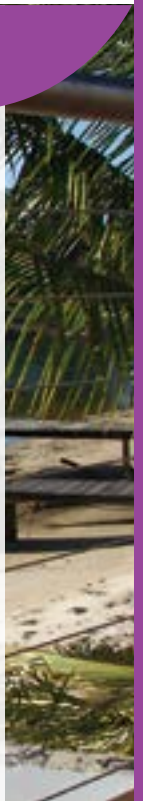


SECTION SIX

Stainless Steel Modular Handrail Systems



		PAGE	
	Handrail Brackets	140 – 141	
	Tube Fittings	142 - 146	
	Post Fittings	147	
	Maintenance	148 - 149	
	Rod Holders	150	
	Glass Clamps	151	
	Spigots & Standoffs	152	

BRIDGE & COMPANY PTY LTD

37 Taree Street

Burleigh Heads QLD 4220

Telephone: (07) 55 935 688

Fax: (07) 55 935 872

Email: bridge@bridco.com.au

www.bridco.com.au

STAINLESS STEEL FACTS

This catalogue contains a comprehensive range of quality stainless steel modular railing systems, suitable for both interior and exterior applications as well as commercial and residential projects.

GRADES: There are many grades of stainless steel, the majority of items in this catalogue are grade 316 with some products in grade 304.

GRADE 304: Ideally suited to indoor use only, has good corrosion resistance and is one of the most commonly used grades of stainless steel.

GRADE 316: Has a higher level of corrosion resistance, therefore is most suitable to outdoor applications and for exposed coastal applications. The grade 316 is often referred to as "marine grade".

Tea staining: Tea staining can be defined as: discoloration of the surface of stainless steel that does not effect the structural integrity or the longevity of the material.

Contributing factors... and what can be done about them.

The relationships between the contributing factors are complex, but generally become increasingly critical closer to marine water.

Environmental factors:

Tea staining occurs most commonly within about 5 kilometers from the surf and becomes progressively worse closer to the marine source. However, wind exposure, pollution levels and high temperatures can create environments where tea staining might occur 20 kilometers or more from the sea water. These same factors also increase corrosion rates of alternative materials.

Surface finish:

Rough surface finishes promote tea staining: The smoother the surface finish the better. A surface roughness (Ra) of less than 0.5 micrometers is strongly recommended, a No:4 finish is inadequate. Typically the products in this catalogue are 320 grit or higher which achieves

a finish better than 0.5 micrometers (Ra).

Maintain regularly:

Stainless steel is not maintenance free, but maintenance friendly. When using stainless steel material outdoors you need to clean periodically, especially in aggressive environments like coastal areas or swimming pools. Washing regularly will reduce the risk of tea staining. For best results wash with soap or a mild detergent and warm water, followed by rinsing with cold water. The appearance of the surface can be improved further if the washed surface is wiped dry.

We recommend Bridco B40 cleaner and B42 polish for the best maintenance results.

** Material Data sheets are provided with B40 & B42.*

Installation and inspection:

After installation the completed structure should be washed and inspected for imperfections or contaminant's caused by the installation process. If discovered any imperfections should be cleaned off and polished with Bridco B40, followed by B42 polish. Hydrochloric acid should not be used on stainless steel as it will stain the surface and may start more serious corrosion.

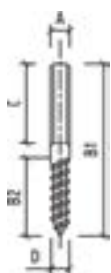
The above notes have been researched by the Australian Stainless Steel Development Association (ASSDA) of which BRIDCO is a member.

Bridco will not be held responsible for any replacements at the time of publication. We recommend checking dimensions with our sales staff before purchasing Bridco products.

Bridco will not be held responsible for any errors, omissions or changes in dimensions at the time, or after publication of this catalogue.



Although all care has been taken in the preparation and publication of this catalogue, the technical information including dimensions in illustrations, drawings and charts are non binding. Bridco does not accept any responsibility for any typographical or other errors which may have occurred during the

**RIGHT DOUBLE THREADED COACH SCREWS**

CODE	A	B1	B2	C	D
SS-78311-08	M8	100	47	40	8

The above item is required for securing wall mounted Handrail brackets.
1 coach screw per bracket.

**FIXED BOLT MOUNT – FLAT RAIL**

CODE	RAIL DIA MM	FINISH
AN-143224000G	FLAT	SATIN

**FIXED BOLT MOUNT – ROUND RAIL**

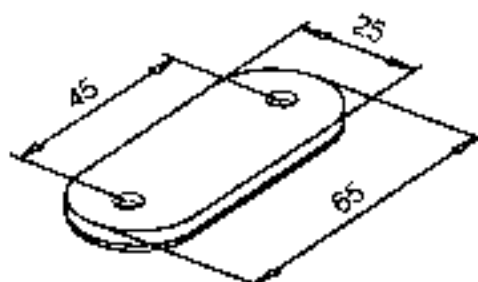
CODE	RAIL DIA MM	FINISH
AN-143224048G	48.3 - 50.8	SATIN

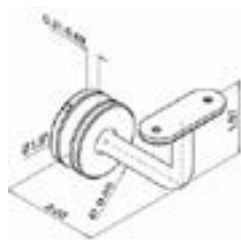
**FIXED WALL MOUNT – ROUND RAIL**

CODE	RAIL DIA MM	FINISH
AN-140112048G	48.3 - 50.8	SATIN

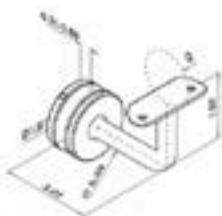
**BOLT MOUNT – WELDED RAIL**

CODE	DESCRIPTION	FINISH
AN-140114000G *	WALL BRACKET	SATIN



**FIXED BOLT MOUNT – FLAT RAIL**

CODE	RAIL DIA MM	FINISH
AN-140117000G	FLAT	SATIN
AN-140117000MG	FLAT	MIRROR

**FIXED BOLT MOUNT – ROUND RAIL**

CODE	RAIL DIA MM	FINISH
AN-140117048G	48.3 - 50.8	SATIN
AN-140117048MG	48.3 - 50.8	MIRROR

**HANDRAIL BRACKET – FLAT RAIL**

CODE	TUBE DIA MM	FINISH
AN-140708000G	FLAT	SATIN

**HANDRAIL BRACKET – ROUND RAIL**

CODE	TUBE DIA MM	FINISH
AN-140708048G	48.3 - 50.8	SATIN

The following tube fittings are for use with 50.8mm/2" tube.



RAIL END CAP – ARCHED

CODE	TUBE	WALL (mm)	B (mm)	H (mm)	FINISH
SR-EC-50	2"	1.6	50.8	2	MIRROR
SR-EC-50S	2"	1.6	50.8	2	SATIN



FLUSH ELBOW – ADJUSTABLE

CODE	TUBE	WALL (mm)	A (mm)	B (mm)	RAIL (mm)	FINISH
SR-AE-50	2"	1.6	57	50.8	1.6	MIRROR



FLUSH ELBOW – FIXED – 90 DEGREE

CODE	TUBE	WALL (mm)	A (mm)	B (mm)	RAIL (mm)	FINISH
SR-FE-50	2"	1.6	57	50.8	1.6	MIRROR



FLUSH JOINER – IN LINE

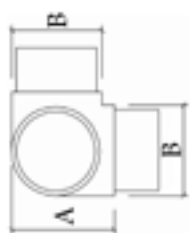
CODE	TUBE	WALL (mm)	A (mm)	B (mm)	FINISH
SR-FJ-50	2"	1.6	54	50.8	MIRROR



HANDRAIL – END 90 DEGREE

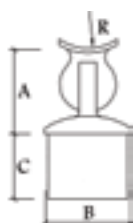
CODE	TUBE	WALL (mm)	A (mm)	B (mm)	C (mm)	FINISH
SR-HE90D-50	2"	1.6	89	50.8	89	MIRROR

The following tube fittings are for use with 50.8mm/2" tube.



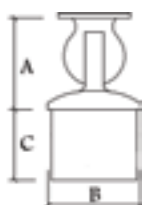
FLUSH JOINER TEE – 90 DEGREE

CODE	TUBE	WALL (mm)	A (mm)	B (mm)	FINISH
SR-FJT90-50	2"	1.6	57	50.8	MIRROR



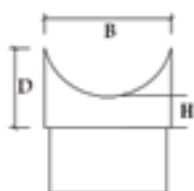
RAIL SUPPORT – ADJUSTABLE – FOR ROUND HANDRAIL

CODE	TUBE	WALL (mm)	A (mm)	B (mm)	C (mm)	R (mm)	FINISH
SR-ARS-50	2"	1.6	51	50.8	32	50.8	MIRROR



RAIL SUPPORT – ADJUSTABLE – FOR FLAT HANDRAIL

CODE	TUBE	WALL (mm)	A (mm)	B (mm)	C (mm)	FINISH
SR-ARSF-50	2"	1.6	51	50.8	32	MIRROR



RAIL SUPPORT

CODE	TUBE	WALL (mm)	A (mm)	B (mm)	H (mm)	RAIL (mm)	FINISH
SR-RS-50	2"	1.6	32	51	10.5	50.8	MIRROR
SR-RS-50S	2"	1.6	32	51	10.5	50.8	SATIN

The following tube fittings are for use with 50.8mm/2" tube.



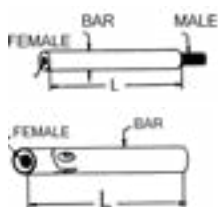
RAIL SUPPORT – CAP – DOMED

CODE	TUBE	WALL (mm)	H (mm)	Ø (mm)	FINISH
SR-RSCD-50	50.8	1.6	M8	2"	MIRROR



COUNTER SUNK SOCKET SCREW

CODE	THREAD	THREAD LENGTH
SS-CSS6010	M6	10



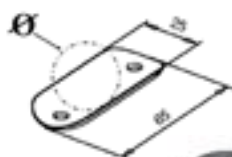
RAIL SUPPORT STEM – FIXED/SWIVEL

CODE	BAR DIA (mm)	THREAD FEMALE	THREAD MALE	L (mm)	FINISH
SR-RSSF-40	14	M6	M8	40	MIRROR
SR-RSSS-40	14	M6	M8	40	MIRROR



RAIL SUPPORT PLATE – FOR FLAT HANDRAIL

CODE	RAIL	FINISH
SR-RSP-00	FLAT	MIRROR



RAIL SUPPORT PLATE – FOR ROUNDED HANDRAIL

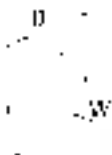
CODE	RAIL	FINISH
SR-RSP-50	50.8	MIRROR



The components above make up this handrail bracket with the option of a support plate for a flat or round handrail.

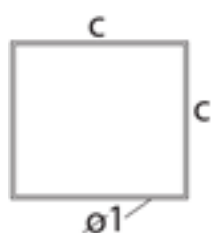
Choose the stem and rail support plate to suit your application.

All components must be ordered individually.

**STAINLESS STEEL TUBE**

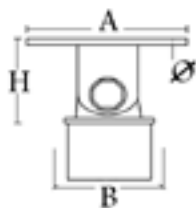
CODE	DESCRIPTION	WALL (mm)	L	DIAMETER (mm)
SR-TUBE	2" M/POLISH TUBE	1.5	6000mm	50.8
SR-TUBEHD	2" M/POLISH TUBE	2	6000mm	50.8
SR-TUBE-25	1" M/POLISH TUBE	1.5	6000mm	25
SR-TUBE-12	1" M/POLISH TUBE	1.2	6000mm	12.7

ALSO AVAILABLE IN A SATIN FINISH

**STAINLESS STEEL TUBE – SQUARE**

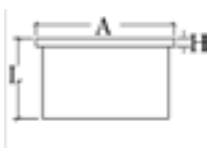
CODE	DESCRIPTION	I Ø	L	C
SR-SQTUBE	2" M/POLISH SQTUBE	1.6	6000mm	50.8

The following tube fittings are for use with 50.8mm/2" tube.



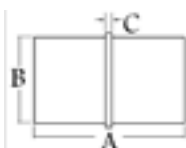
ADJUSTABLE RAIL SUPPORT – FLAT RAIL

CODE	TUBE	WALL (mm)	A (mm)	B (mm)	H (mm)	I (mm)	FINISH
SR-SQ40112	2"	1.5mm	66	50.8	50	6	MIRROR
SR-SQ40112S	2"	1.5mm	66	50.8	50	6	SATIN



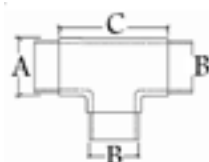
END CAP – FLAT

CODE	TUBE	WALL (mm)	A (mm)	H (mm)	L (mm)	FINISH
SR-SQ30112	2"	1.5mm	50.8	3	33	MIRROR



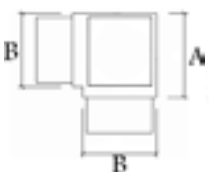
FLUSH JOINER – "IN LINE"

CODE	TUBE	WALL (mm)	A (mm)	B (mm)	C (mm)	FINISH
SR-SQ10712	2"	1.5mm	66	50.8	6	MIRROR



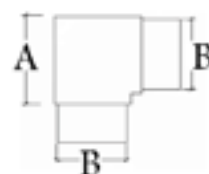
FLUSH JOINER – TEE

CODE	TUBE	WALL (mm)	A (mm)	B (mm)	C (mm)	FINISH
SR-SQ10312	2"	1.5mm	60	50.8	75	MIRROR



FLUSH JOINER – 90 DEGREE TEE

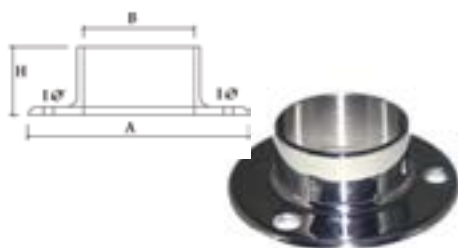
CODE	TUBE	WALL (mm)	A (mm)	B (mm)	FINISH
SR-SQ10512	2"	1.5mm	63	50.8	MIRROR



FLUSH JOINER – 90 DEGREE

CODE	TUBE	WALL (mm)	A (mm)	B (mm)	FINISH
SR-SQ10112	2"	1.5mm	63	50.8	MIRROR

The following post fittings are for use with 50.8mm / 2" tube.



BASE PLATE FLANGE – ROUND BASE

CODE	TUBE	A (mm)	B (mm)	H (mm)	I (mm)	FINISH
SR-BPFR-50	2"	102	50.8	31	9	MIRROR
SR-BPFRX-50	2"	102	50.8	31	9	MIRROR

X - Indicates flange without grub screw.



BASE PLATE FLANGE – OBLONG BASE

CODE	TUBE	A (mm)	B (mm)	H (mm)	I (mm)	C (mm)	FINISH
SR-BPF0-50	2"	100	50.8	31	9	70	MIRROR
SR-BPFX-50	2"	100	50.8	31	9	70	MIRROR

X - Indicates flange without grub screw.



BASE PLATE – HEAVY DUTY – WELD ON

CODE	TUBE	A (mm)	B (mm)	I (mm)	T (mm)	FINISH
SR-BPHD-50	2"	100	8	9	51	SATIN



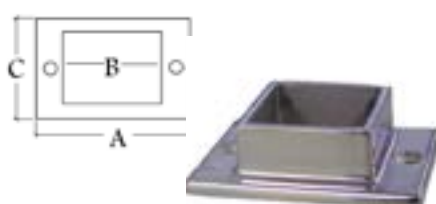
BASE PLATE – WELD ON

CODE	TUBE	A (mm)	B (mm)	I (mm)	T (mm)	FINISH
SR-BP-50	2"	100	3	8.5	51	SATIN



BASE PLATE COVER – ARCHED

CODE	TUBE	A (mm)	B (mm)	H (mm)	T (mm)	FINISH
SR-BPC-50	2"	102	3	26	51	MIRROR



BASE PLATE FLANGE – OBLONG BASE

CODE	TUBE	WALL (mm)	A (mm)	B (mm)	C (mm)	H (mm)	I (mm)	FINISH
SR-SQ20112	2"	1.5mm	116	50.8	80	30	8	MIRROR

MAINTENANCE

Stainless steel is not maintenance free, but maintenance friendly. When using stainless steel material outdoors you need to clean periodically, especially in aggressive environments like coastal areas or swimming pools. Washing regularly will reduce the risk of tea staining. For best results wash with soap or a mild detergent and warm water, followed by rinsing with cold water. The appearance of the surface can be improved further if the washed surface is wiped dry.

We recommend Bridco B40 cleaner and B42 polish for the best maintenance results, (see page 29).

For high salt or commercial applications G316 with a high or mirror polish should be used.

Satin finished products require extra maintenance especially in high salt environments. Rough surface finishes promote tea staining: The smoother the surface finish, the better. A surface roughness (Ra) of less than 0.5 micrometres is strongly recommended.

Further treatments such as passivating or electrolyzing will also promote better corrosion resistance.

Please note that modular hand rail fittings, open body turnbuckles etc, in their design, also require more regular maintenance due to gaps and crevices that trap foreign contaminants.

Stainless Steel maintenance of external applications.

Rainfall on a regular basis will remove dirt, dust and other deposits from stainless steel if the design of the facade allows. In most parts of Australia however, there is often insufficient rainfall to effectively clean external fittings, Bridco therefore recommend the use of the cleaning schedule below.

STAINLESS STEEL CLEANING SCHEDULE

ENVIRONMENT	Distance from beachfront or sheltered bay	Cleaning interval
Mild	15km+	Every 12 months
Moderate	1 - 15km	Every 4-6 months
Marine/Industrial/Urban	500m - beachfront / 100m - 1km - sheltered bay	Every 3 months
Sever Marine/Industrial/Busy Urban	500m - beachfront / 100m - sheltered bay	Weekly

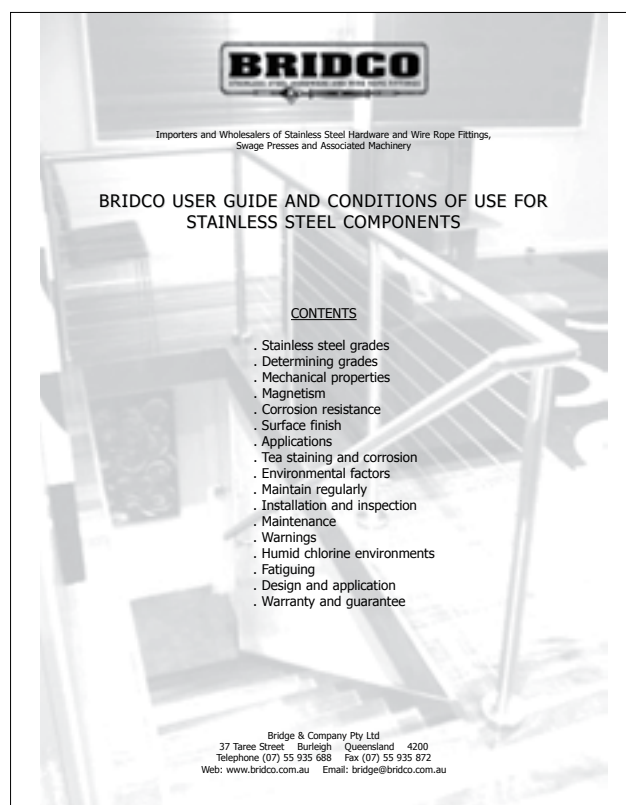
BRIDCO USER GUIDE & CONDITIONS OF USE FOR STAINLESS STEEL COMPONENTS

Bridco have published a four page brochure containing important information for users of stainless steel components.

The user guide covers such issues as cleaning & maintenance, stainless steel grades, corrosion resistance & environmental factors.

Bridco recommend reading this guide before purchasing or selling stainless steel fittings and/or components.

To obtain a copy of the Bridco user guide please contact our sales department, alternatively a copy can be downloaded by visiting our website.



BRIDCO CLEANER



B40 stainless steel cleaner is a mixture of acids, selected solvents and surfactants specially designed to remove tea staining and grout from stainless steel stanchions, rails, stainless steel wire rope etc. B40 will not corrode stainless steel nor will it turn green or brown as hydrochloric based cleaners will.

*A hazardous goods surcharge of +50% is applied to all freight costs for B40.

Standard box contains 6 x 500ml spray bottles (Hazardous Cargo). 20 litre containers also available.

*MATERIAL DATA SHEETS ARE PROVIDED WITH B40 & B42.

BRIDCO POLISH



B42 Stainless steel cleaner is specially designed to remove tea staining and fine scratches from stainless steel railings and fittings, etc.

B42 deposits a protective low surface energy, water resistant layer which repels water and air borne contaminants for several months before re-application may be required.

Standard box contains 15 x 250ml





ROD HOLDER – ROUND POST 12mm

CODE	Ø (mm)	D (mm)	FINISH
AN-140830048MG	12	48.3-50.8	MIRROR
AN-140830150MG	12.7	48.3-50.8	MIRROR



ROD HOLDER – LEFT END – ROUND POST – 12mm & 12.7mm

CODE	Ø (mm)	D (mm)	FINISH
AN-140832048G	12	48.3-50.8	SATIN
AN-140832150MG	12.7	48.3-50.8	MIRROR



ROD HOLDER – RIGHT END – ROUND POST – 12mm & 12.7mm

CODE	Ø (mm)	D (mm)	FINISH
AN-140833048G	12	48.3-50.8	SATIN
AN-140833150MG	12.7	48.3-50.8	MIRROR



STAINLESS STEEL ROD

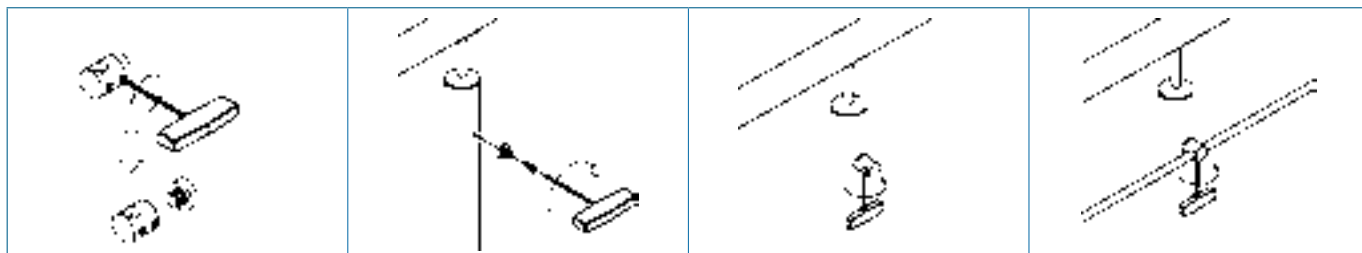
CODE	DIAMETER	FINISH
AN-1409000120G	5000mm	SATIN

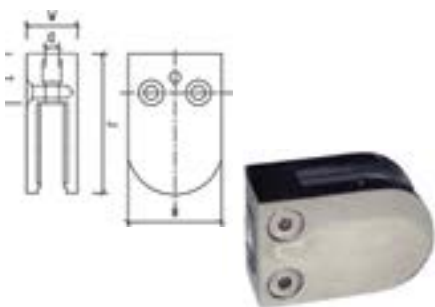


STAINLESS STEEL TUBE

CODE	DESCRIPTION	WALL (mm)	L	DIAMETER (mm)
SR-TUBE-12	1" M/POLISH TUBE	1.2	6000mm	12.7

INFORMATION

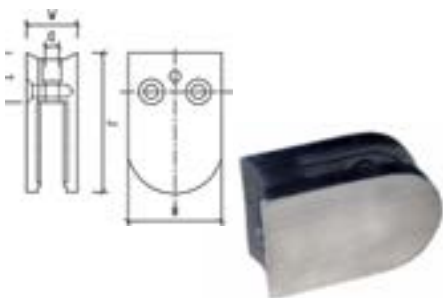


**GLASS CLAMP – “D” SHAPE – FLAT POST**

CODE	GLASS WIDTH	POST	H (mm)	L (mm)	W (mm)	T (mm)	D (mm)	FINISH
SR-GCM-00	6, 8, 10, 12mm	FLAT	45	63	26	16	9	MP



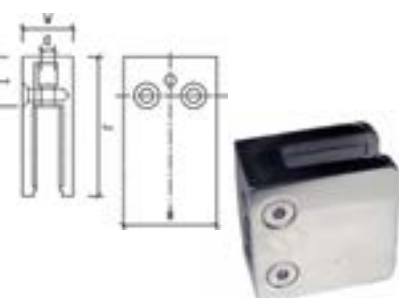
CODE	DESCRIPTION	PER CLAMP
SS-SOCM820	HEX SCREW M8 X 20mm	1

**GLASS CLAMP – “D” SHAPE– ROUND POST**

CODE	GLASS WIDTH	POST	H (mm)	L (mm)	W (mm)	T (mm)	D (mm)	FINISH
SR-GCM-50	6, 8, 10, 12mm	50.8	45	63	26	16	9	MP
SR-GCM-50S	6, 8, 10, 12mm	50.8	45	63	26	16	9	SATIN



CODE	DESCRIPTION	PER CLAMP
SS-SOCM820	HEX SCREW M8 X 20mm	1

**GLASS CLAMP – SHAPE – FLAT POST**

CODE	GLASS WIDTH	POST	H (mm)	L (mm)	W (mm)	T (mm)	D (mm)	FINISH
SR-GCSQ-00	8, 10, 12mm	FLAT	55	55	32	16	9	MP
SR-GCSQ-00S	8, 10, 12mm	FLAT	55	55	32	16	9	SATIN
SR-GCSQ-00SM	6, 8mm	FLAT	45	45	28	16	9	MP



CODE	DESCRIPTION	PER CLAMP
SS-SOCM820	HEX SCREW M8 X 20mm	1

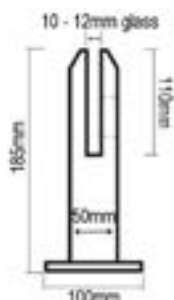
**GLASS CLAMP – SQUARE – ROUND POST**

CODE	GLASS WIDTH	POST	H (mm)	L (mm)	W (mm)	T (mm)	D (mm)	FINISH
SR-GCSQ-50	8, 10, 12mm	50.8	55	55	32	16	9	MP
SR-GCSQ-50S	8, 10, 12mm	50.8	55	55	32	16	9	SATIN
SR-GCSQ-50SM	6, 8mm	50.8	45	45	28	16	9	MP



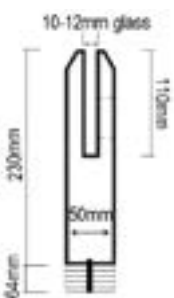
CODE	DESCRIPTION	PER CLAMP
SS-SOCM820	HEX SCREW M8 X 20mm	1

GLASS FENCING



STAINLESS STEEL SPIGOT – BASE PLATE MOUNT

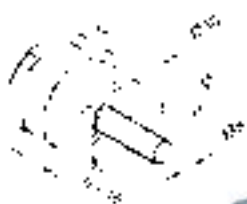
CODE	GLASS DIAMETER	FINISH
SR-SPIGBP-50	12mm	MIRROR POLISH



STAINLESS STEEL SPIGOT – CORE DRILL MOUNT

CODE	GLASS DIAMETER	FINISH
SR-SPIGCD-50	12mm	MIRROR POLISH

Drilling of glass is not required for the above spigots.



GLASS ADAPTER – ROUND SURFACES

CODE	SURFACE	FINISH
AN-140746048G	48.3-50.8mm TUBE	SATIN



GLASS ADAPTER – ROUND SURFACES

CODE	SURFACE	FINISH
AN-140747048G	48.3-50.8mm TUBE	SATIN