



Bridge & Company Pty Ltd

37 Taree Street

Burleigh

QLD 4220

Telephone (07) 5593 5688 Fax (07) 5593 5872

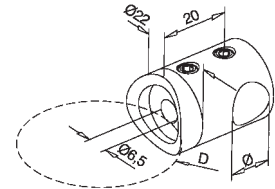
www.bridco.com.au bridge@bridco.com.au

A new addition to Bridco's Modular Handrail Systems are the Grade 316, 12.7mm (1/2"), stainless steel rod holders. This system is a far more cost effective alternative to comparable components designed for M12 solid stainless steel rod.

The new Rod Holders are designed to suit 12.7mm (1/2") stainless steel tube, which is approximately 1/3 of the price of stainless steel rod. Stainless steel tube is readily available in mirror polish finish, unlike the stainless steel rod, which is commonly manufactured in satin finish.

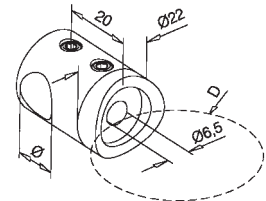


Rod Holder/Left End for Round Post AISI 316



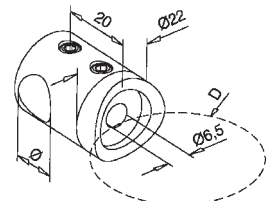
CODE	Ø		D = TUBE	FINISH
	MET	IMP		
AN-140832150MG	12.7mm	1/2"	48.3 -50.8	MP

Rod Holder/Right End for Round Post AISI 316



CODE	Ø		D = TUBE	FINISH
	MET	IMP		
AN-140833150MG	12.7mm	1/2"	48.3 - 50.8	MP

Rod Holder/Centre for Round Post AISI 316



CODE	Ø		D = TUBE	FINISH
	MET	IMP		
AN-140830150MG	12.7mm	1/2"	48.3 - 50.8	MP

Importers and Wholesalers of Stainless Steel Hardware and Wire Rope Fittings, Swage Presses and Associated Machinery.